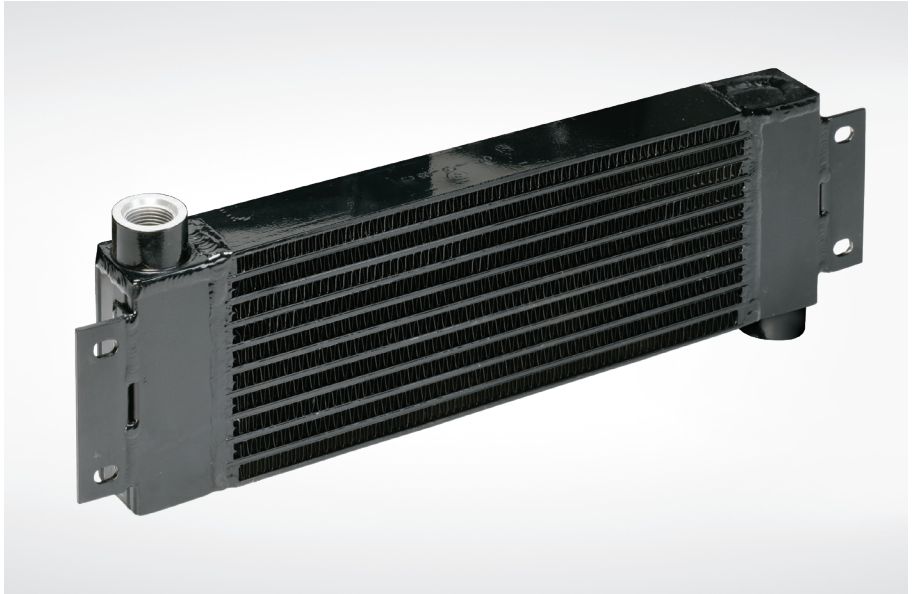


BGA Series – Brazed Aluminum Compressed Air Belt Guard Cooler

The rugged Air Belt Guard BGA Series provides high performance, high technology in a compact unit. This heavy duty design features brazed bar and plate aluminum core construction for excellent heat recovery.



How to Order

Model Series

BGA

BGA

Model Size Selected

35
60
100

Connection Type

1 - NPT
2 - SAE

Features

- Brazed bar and plate aluminum core
- Energy efficient
- High performance
- High technology compact design
- Rugged heavy duty construction
- Excellent for heat recovery
- AKG crossover

Customer Focused and Driven

- All catalog product is available with short lead-times
- Expert application engineers are available to select and size the right product Custom designs are available

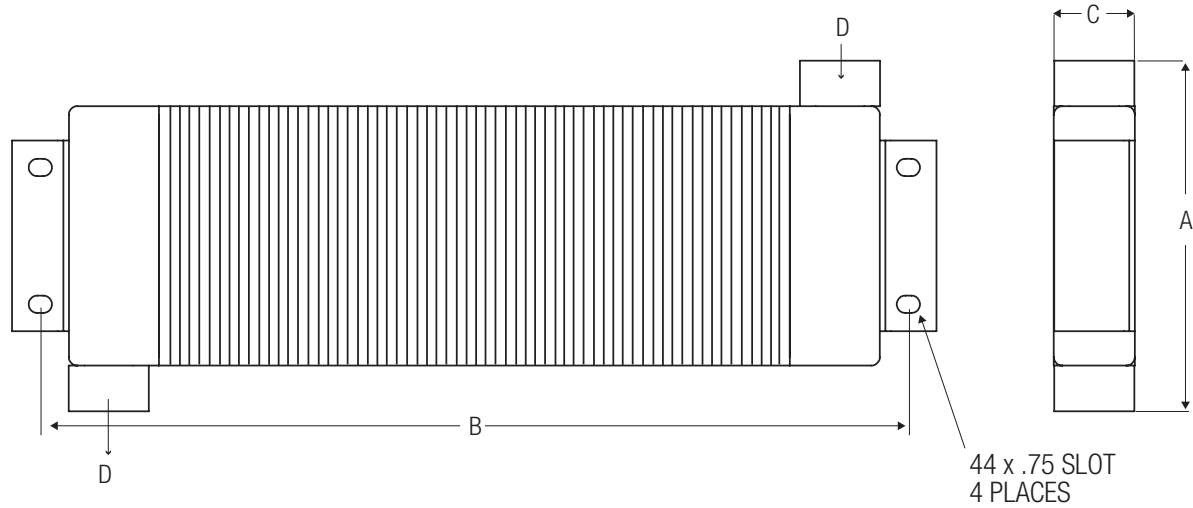
Ratings

- Maximum Operating Pressure 250 PSI
- Maximum Operating Temperature 350°F

Materials

- Core Brazed aluminum bar & plate

Dimensions



Model No.	A	B	C	D NPT
BGA-35-1	6.81	17.68	1.77	1.00
BGA-35-2	6.81	17.68	1.77	1.00
BGA-60-1	8.03	17.68	1.77	1.00
BGA-60-2	8.03	17.68	1.77	1.00
BGA-100-1	10.43	19.65	1.77	1.00
BGA-100-2	10.43	19.65	1.77	1.00

All dimensions are inches. We reserve the right to make reasonable design changes without notice.

Model No.	Maximum SCFM*	Model Rating Approach Temperature
BGA-35-1	35	5°F for 18 SCFM 15°F for 35 SCFM
BGA-35-2	35	5°F for 18 SCFM 15°F for 35 SCFM
BGA-60-1	60	10°F for 35 SCFM 25°F for 60 SCFM
BGA-60-2	60	10°F for 35 SCFM 25°F for 60 SCFM
BGA-100-1	100	13°F for 70 SCFM 25°F for 100 SCFM
BGA-100-2	100	13°F for 70 SCFM 25°F for 100 SCFM

*Ratings are based on a 250°F inlet temperature, 100 PSIG, and 500 FPM air face velocity across the ambient side of the aftercooler. Maximum pressure drop is 3 PSI or less—all models. 25°F approach temperature, unless stated otherwise.