

# Electronic Temperature Control & Bulb Well Assembly (AC)

## Part Number 86816

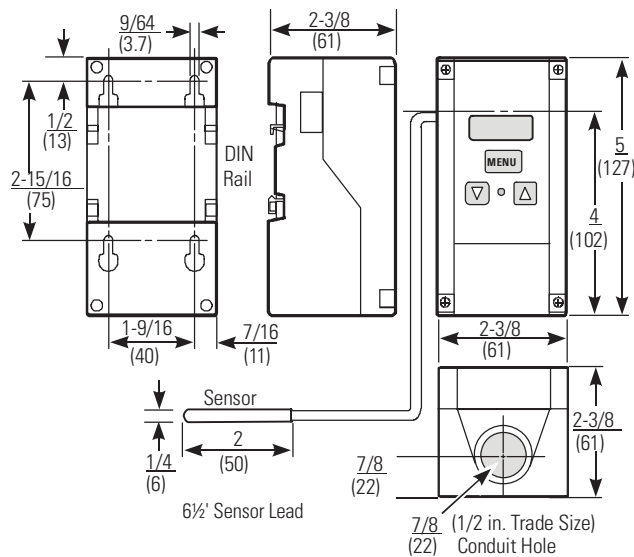
This is a line voltage single-stage electronic temperature control with single-pole, double-throw relay output and LED indication. It is designed with heating or cooling modes of operation, adjustable differential, and an interchangeable temperature sensor. The control couples electronic accuracy with remote sensing capability in a NEMA 1 high-impact plastic enclosure suitable for surface or DIN-rail mounting.

Pilot Duty Relay needed for 460V, not offered by Thermal Transfer Products.



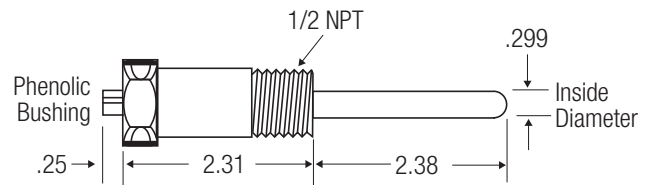
## 67428 Temperature Control with NEMA 1 Enclosure

### Dimensions Inches (mm)



## 67429 Bulb Well

### Dimensions Inches



## Specifications

<b>Setpoint Range</b>	-30°F to 212°F (-34°C to 100°C)			
<b>Differential Range</b>	1°F to 30°F (0.5°C to 17°C)			
<b>Input Voltage</b>	120 or 208/240 VAC, 50/60 HZ (1 Phase only)			
<b>Current Draw</b>	1.8 VA			
<b>Relay Electrical Ratings</b>	<b>SPDT</b>	<b>120V NO (NC)</b>	<b>280V NO (NC)</b>	<b>240V NO (NC)</b>
	Horsepower:	1 (0.25) HP	1 (0.33) HP	1 (0.5) HP
	Full Load Amps:	16 (5.8) A	9.2 (4.0) A	8.0 (4.9) A
	Locked Rotor Amps:	96 (3) A	55 (24) A	48 (29) A
	Non-Inductive Amps:	15 (10) A	10 (10) A	10 (10) A
Pilot Duty: 125 VA (NO) @ 24-240 VAC, 125 VA (NC) @ 120-240 VAC, 50 VA (NC) @ 24 VAC				
<b>Sensor Type</b>	Replaceable Thermistor with Reference Resistance of 2.25 K ohms at 77°F (25°C)			
<b>Control Ambient Temperature</b>	Operating: -30°F to 140°F (-34°C to 60°C) Shipping: -40°F to 185°F (-40°C to 85°C)			
<b>Ambient Humidity</b>	0 to 95% RH Non-Condensing, Maximum Dew Point: 85°F (29°C)			
<b>Control Material</b>	Case and Cover: NEMA 1 High Impact Lexan 950® Plastic.			
<b>Agency Listings</b>	UL Listed: File E27734, Guide XAPX (Temperature Indicating and Regulating Equipment) CSA Approved File LR948 Class 4813-02			

Lexan 950 is a registered trademark of the General Electric Company. The performance specifications are nominal.